

# CAMPAIGN GUIDELINES

VERSION 1.0 | JANUARY 2018



CALIFORNIA COMMUNITY COLLEGES  
CAREER EDUCATION







# CONTENTS

<b>OVERVIEW</b>	<b>4</b>
<b>CAMPAIGN GUIDELINES</b>	<b>6</b>
PRINT READY COLLATERAL	7
TEMPLATE USAGE	10
TYPOGRAPHY	18
COLOR	20
PHOTOGRAPHY	22
<b>EVENT COLLATERAL</b>	<b>26</b>
CUT-OUTS, POSTERS, DIRECTIONALS AND TENT SIGNS	27
<b>DIGITAL COLLATERAL</b>	<b>31</b>
WEB BUTTONS AND STATIC BANNERS	32
SOCIAL MEDIA	38
<b>VIDEOS/RADIO</b>	<b>43</b>
VIDEO AND SCRIPTS	44
<b>CONTACT</b>	<b>BC</b>





# OVERVIEW

---

Career Education, the evolution from Career Technical Education, was created to cover the breadth of programs available at the 114 California Community Colleges. Career Education programs offers quality, hands-on education that allows individuals to thrive in the workforce and in their communities. The campaign, colors, fonts and materials have been created for your use to show just that.



## THE CAMPAIGN

Career Education programs help students prepare for more than 200 career pathways by exploring, collaborating and doing. This document will serve as a printable reference guide and provide easy instructions for you to customize your Career Education marketing materials for your college or region. Information like font types, colors and preferred styling are outlined in the following pages for quick reference.

Visit **[www.CareerEducationToolkit.cccco.edu](http://www.CareerEducationToolkit.cccco.edu)** to find ready-to-use downloadable assets, downloadable templates for your own customization and visual template guides to walk you through the design options.

# CAMPAIGN GUIDELINES

---

These Campaign Guidelines are designed to serve as a printable guide to help you successfully create marketing materials for Career Education at your school or region while keeping visual consistency across all materials.



# PRINT READY COLLATERAL

Print ready assets have been created for easy download and quick use. Branding of the California Community Colleges and the URL of [CaliforniaCareerEducation.com](https://www.californiacareereducation.com) has already been included. Print ready collateral includes a general education brochure and regional fact sheets for each region within the California Community Colleges system.

All print ready assets are created in Adobe InDesign CC 2018. An Adobe InDesign **.idml** file is also included in the download, which allows older versions of Adobe InDesign to edit and customize as needed.



## OUTREACH COLLATERAL - PRINT READY

## BROCHURE - SIDE 1



**WHAT IS CAREER EDUCATION?**

Career Education gives you the hands-on, practical training needed to earn a certificate, open the door to a rewarding career, or get you started on your path toward a bachelor's degree.

The California Community Colleges is the nation's largest provider of career training programs.

We prepare students for rewarding jobs in high-demand programs that can lead to immediate employment.

Choose from more than 200 career programs that can prepare you for jobs in fields such as Advanced Manufacturing, Digital Media, Automotive Technology, Architecture, and many more.

**WHY SHOULD I CONSIDER A CAREER EDUCATION PROGRAM?**

Think a high school degree opens the door to a good job? Think again!

By 2020, 65% of all jobs in the U.S. will require training beyond high school.

Career Education is the smart, affordable way to get the practical skills you need to compete in today's fast-changing job market.

Our classes are taught by industry experts who have worked in their fields. You won't just be sitting in lectures – you will be gaining hands-on experience.

Career Education is a smart investment in your future.

CALIFORNIA PRESENTS CURRENTLY PAY **\$46 PER UNIT** FOR COMMUNITY COLLEGE COURSES

Some career fields with the highest median annual salary five years after graduating from Career Education programs include\*

WATER TECHNOLOGY	ELECTRICAL, POWER & TRANSMISSION	AERONAUTICAL & AVIATION TECHNOLOGY
\$86,391	\$110,829	\$76,187

\*Based on wage data available through salarysource.com

**CHOOSE FROM MORE THAN 200 DIFFERENT CAREER PROGRAMS**

to get started on your path to a rewarding, good-paying career today!

**OTHER HELPFUL TOOLS**

**SalarySource.cccco.edu**  
Find salary information for different career fields.

**Here To Career Mobile App**  
Take the quiz to find your career path.

**Stepforward.cccco.edu**  
Learn about qualifying for priority class registration.

**CONNECT WITH US**

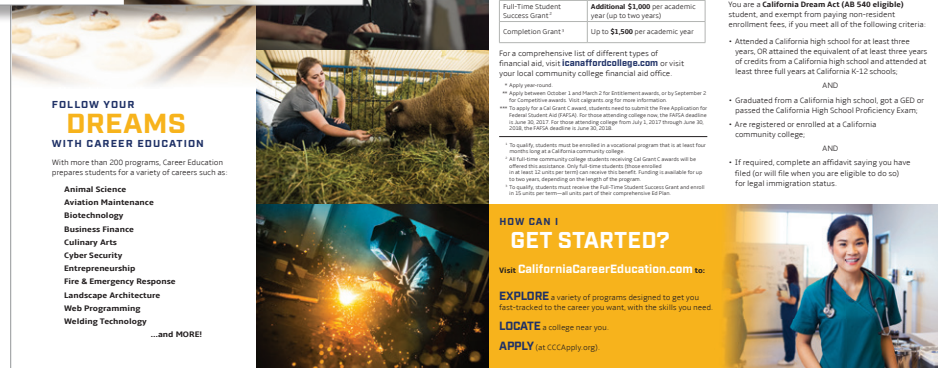
- Twitter: @calaffordcollege
- Facebook: /calaffordcollege
- Instagram: /calaffordcollege
- YouTube: /calaffordcollege

The California Community Colleges is the largest system of higher education in the nation, with 114 colleges annually serving 2.1 million students. For more information, visit [californiacommunitycolleges.cccco.edu](http://californiacommunitycolleges.cccco.edu)

**FOR THE JOBS OF TODAY AND TOMORROW**

CALIFORNIA COMMUNITY COLLEGES  
CAREER EDUCATION

## BROCHURE - SIDE 2



**FOLLOW YOUR DREAMS WITH CAREER EDUCATION**

With more than 200 programs, Career Education prepares students for a variety of careers such as:

- Animal Science
- Aviation Maintenance
- Biotechnology
- Business Finance
- Culinary Arts
- Cyber Security
- Entrepreneurship
- Fire & Emergency Response
- Landscape Architecture
- Web Programming
- Welding Technology
- ...and MORE!

**HOW WILL I AFFORD IT?**

Financial aid is available year-round to help cover the cost of fees, books, supplies, and sometimes even rent. There are many different types of financial aid (see chart).

COMMON TYPES OF STATE AND FEDERAL AID	AWARD AMOUNT (SUBJECT TO CHANGE)
Federal Pell Grant	Up to \$5,920 per academic year*
Cal Grant B	Up to \$1,672 per academic year**
Fee Waiver	Waives enrollment fees*
Cal Grant C†	Up to \$1,094 per academic year (up to two years)***
Full-Time Student Success Grant†	Additional \$1,000 per academic year (up to two years)
Completion Grant†	Up to \$1,500 per academic year

For a comprehensive list of different types of financial aid, visit [icannaffordcollege.com](http://icannaffordcollege.com) or visit your local community college financial aid office.

\* Apply year-round

\*\* Apply between October 1 and March 2 for the following awards, or by September 2 for the following awards. Visit [icannaffordcollege.com](http://icannaffordcollege.com) for more information.

\*\*\* To apply for a Cal Grant C award, students must complete the Free Application for Federal Student Aid (FAFSA). For those attending college now, the FAFSA deadline is June 30, 2017. For those attending college from July 1, 2017 through June 30, 2018, the FAFSA deadline is June 30, 2018.

† To qualify, students must be enrolled in a rotational program that is at least four months long at a California community college.

‡ All full-time community college students receiving Cal Grant C awards will be offered this assistance. Once full-time students, those enrolled in at least 12 units per term can receive this benefit. Funding is available for up to two years, depending on the length of the program.

§ To qualify, students must receive the Full-Time Student Success Grant and enroll in 15 units per term – all units part of their comprehensive Ed Plan.

The first step in accessing these resources is to apply, even if you aren't sure you'll qualify. Complete the **Free Application for Federal Student Aid (FAFSA)** – which opens the door to most types of financial aid – at [icannaffordcollege.com](http://icannaffordcollege.com).

The Free Application for Federal Student Aid (FAFSA) is available every year on October 1. It's best to apply as soon as you can, so you get the most financial aid possible.

You are a **California Dream Act (AB 540 eligible)** student, and exempt from paying non-resident enrollment fees, if you meet all of the following criteria:

- Attended a California high school for at least three years, OR attained the equivalent of at least three years of credits from a California high school and attended at least three full years at California K-12 schools, AND
- Graduated from a California high school, got a GED or passed the California High School Proficiency Exam; AND
- Are registered or enrolled at a California community college; AND
- If required, complete an affidavit saying you have filed (or will file when you are eligible to do so) for legal immigration status.

**HOW CAN I GET STARTED?**

Visit [CaliforniaCareerEducation.com](http://CaliforniaCareerEducation.com) to:

- EXPLORE** a variety of programs designed to get you fast-tracked to the career you want, with the skills you need.
- LOCATE** a college near you.
- APPLY** (at CCCApply.org)



## OUTREACH COLLATERAL - PRINT READY

## REGIONAL FACT SHEETS

**CALIFORNIA COMMUNITY COLLEGES**  
**CAREER EDUCATION**

## SAN DIEGO AND IMPERIAL REGION

**SAN DIEGO AND IMPERIAL COUNTIES**

The California Community Colleges is the largest provider of workforce training in the nation. With more than 100 Career Education programs in Imperial County and over 600 in San Diego County, we are leading California Community College's Career Education programs both in the size of our enrollment and quality and affordable education giving students new world jobs that lead them to the advanced level of college or help them find their ideal career building stronger and more prosperous communities in the process.

### COMMUNITY COLLEGES IN SAN DIEGO AND IMPERIAL REGION

IMPERIAL VALLEY COLLEGE	SAN DIEGO COUNTY OFFICE
MARICOPA JUNIOR COLLEGE	SAN DIEGO STATE UNIVERSITY
MISSION VILLAGE COLLEGE	SOUTHERN ILLINOIS UNIVERSITY
NORTH COAST COMMUNITY COLLEGE	SOUTHERN NEW HAMPSHIRE UNIVERSITY
PACIFIC COAST COLLEGE	SOUTHWESTERN COLLEGE
PACIFIC OCEANOGRAPHY COLLEGE	SOUTHWESTERN UNIVERSITY

The San Diego and Imperial Region has 10 California community colleges offering a variety of cultural and hands-on Career Education programs. These programs are taught by instructors and advisors who seek to help their staff and our program provide the training and skills you need for the jobs that meet your:

**SAN DIEGO STATE UNIVERSITY**  
SCHOOL OF BUSINESS & ECONOMICS

[www.sds.edu/careereducation.aspx](http://www.sds.edu/careereducation.aspx) - go page 7

[illegible]

**CALIFORNIA COMMUNITY COLLEGES**  
CAREER EDUCATION

## BAY REGION

ALAMEDA, CONTRA COSTA, MARIN, MONTESINOS, NAPA, SAN FRANCISCO, SAN JEROME, SAN JOSE, SAN MATEO, SAN PABLO, SUTTER, YUBA

**COMMUNITY COLLEGES IN THE BAY REGION**

ALAMEDA COMMUNITY COLLEGE  
CONTRA COSTA COMMUNITY COLLEGE  
MARIN COMMUNITY COLLEGE  
MONTESINOS COMMUNITY COLLEGE  
NAPA COMMUNITY COLLEGE  
SAN FRANCISCO STATE UNIVERSITY  
SAN JEROME COMMUNITY COLLEGE  
SAN JOSE STATE UNIVERSITY  
SAN MATEO COMMUNITY COLLEGE  
SAN PABLO COMMUNITY COLLEGE  
SUTTER COMMUNITY COLLEGE  
YUBA COMMUNITY COLLEGE

**COMMUNITY COLLEGES IN THE SAN BAY REGION**

ALAMEDA COMMUNITY COLLEGE  
CONTRA COSTA COMMUNITY COLLEGE  
MARIN COMMUNITY COLLEGE  
MONTESINOS COMMUNITY COLLEGE  
NAPA COMMUNITY COLLEGE  
SAN FRANCISCO STATE UNIVERSITY  
SAN JEROME COMMUNITY COLLEGE  
SAN JOSE STATE UNIVERSITY  
SAN MATEO COMMUNITY COLLEGE  
SAN PABLO COMMUNITY COLLEGE  
SUTTER COMMUNITY COLLEGE  
YUBA COMMUNITY COLLEGE

**COMMUNITY COLLEGES IN THE MID PENINSULA REGION**

ALAMEDA COMMUNITY COLLEGE  
CONTRA COSTA COMMUNITY COLLEGE  
MARIN COMMUNITY COLLEGE  
MONTESINOS COMMUNITY COLLEGE  
NAPA COMMUNITY COLLEGE  
SAN FRANCISCO STATE UNIVERSITY  
SAN JEROME COMMUNITY COLLEGE  
SAN JOSE STATE UNIVERSITY  
SAN MATEO COMMUNITY COLLEGE  
SAN PABLO COMMUNITY COLLEGE  
SUTTER COMMUNITY COLLEGE  
YUBA COMMUNITY COLLEGE

**COMMUNITY COLLEGES IN THE SOUTHWEST REGION**

ALAMEDA COMMUNITY COLLEGE  
CONTRA COSTA COMMUNITY COLLEGE  
MARIN COMMUNITY COLLEGE  
MONTESINOS COMMUNITY COLLEGE  
NAPA COMMUNITY COLLEGE  
SAN FRANCISCO STATE UNIVERSITY  
SAN JEROME COMMUNITY COLLEGE  
SAN JOSE STATE UNIVERSITY  
SAN MATEO COMMUNITY COLLEGE  
SAN PABLO COMMUNITY COLLEGE  
SUTTER COMMUNITY COLLEGE  
YUBA COMMUNITY COLLEGE

**COMMUNITY COLLEGES IN SANTA CRUZ COUNTY**

ALAMEDA COMMUNITY COLLEGE  
CONTRA COSTA COMMUNITY COLLEGE  
MARIN COMMUNITY COLLEGE  
MONTESINOS COMMUNITY COLLEGE  
NAPA COMMUNITY COLLEGE  
SAN FRANCISCO STATE UNIVERSITY  
SAN JEROME COMMUNITY COLLEGE  
SAN JOSE STATE UNIVERSITY  
SAN MATEO COMMUNITY COLLEGE  
SAN PABLO COMMUNITY COLLEGE  
SUTTER COMMUNITY COLLEGE  
YUBA COMMUNITY COLLEGE

The Bay Region has 28 California community colleges offering a variety of college and trade-on Career Education programs. These programs are designed to meet the needs of students who are looking for a career path and provide the training and skills you need to get the job that you need!

**BACC**  
2013  
2014

[illegible]

**CALIFORNIA COMMUNITY COLLEGES**  
CAREER EDUCATION

# CENTRAL AND MOTHER LOLE REGION

**ALPINE, ARIZONA, CALAVERAS, FRESNO, HUMBoldt, KERN, KINGS, MARIQUITA, MARICOPA, MENDOCINO, MONTE SERRA, SAN ANTONIO, STANISLAUS, YUBA, YULIE, AND YULIE/CLIMATE DISTRICTS**


The California Community Colleges is the largest provider of workforce training in the nation. With more than 100 Career College and Career Center campuses from California, from San Francisco to San Diego, and affordable education options for students nationwide, the California Community Colleges is the leading provider of workforce training and workforce development. The California Community Colleges is the largest provider of workforce training and workforce development. The California Community Colleges is the largest provider of workforce training and workforce development.

**COMMUNITY COLLEGES IN THE CENTRAL AND MOTHER LOLE REGION**

<b>ALPINE COMMUNITY COLLEGE</b>	<b>ARIZONA COMMUNITY COLLEGE</b>	<b>ARIZONA COMMUNITY COLLEGE</b>
<b>CALAVERAS COMMUNITY COLLEGE</b>	<b>CALAVERAS COMMUNITY COLLEGE</b>	<b>CALAVERAS COMMUNITY COLLEGE</b>
<b>FRESNO COMMUNITY COLLEGE</b>	<b>FRESNO COMMUNITY COLLEGE</b>	<b>FRESNO COMMUNITY COLLEGE</b>
<b>HUMBOLDT COMMUNITY COLLEGE</b>	<b>HUMBOLDT COMMUNITY COLLEGE</b>	<b>HUMBOLDT COMMUNITY COLLEGE</b>
<b>KERN COMMUNITY COLLEGE</b>	<b>KERN COMMUNITY COLLEGE</b>	<b>KERN COMMUNITY COLLEGE</b>
<b>KINGS COMMUNITY COLLEGE</b>	<b>KINGS COMMUNITY COLLEGE</b>	<b>KINGS COMMUNITY COLLEGE</b>
<b>MARIQUITA COMMUNITY COLLEGE</b>	<b>MARIQUITA COMMUNITY COLLEGE</b>	<b>MARIQUITA COMMUNITY COLLEGE</b>
<b>MONTE SERRA COMMUNITY COLLEGE</b>	<b>MONTE SERRA COMMUNITY COLLEGE</b>	<b>MONTE SERRA COMMUNITY COLLEGE</b>
<b>SAN ANTONIO COMMUNITY COLLEGE</b>	<b>SAN ANTONIO COMMUNITY COLLEGE</b>	<b>SAN ANTONIO COMMUNITY COLLEGE</b>
<b>STANISLAUS COMMUNITY COLLEGE</b>	<b>STANISLAUS COMMUNITY COLLEGE</b>	<b>STANISLAUS COMMUNITY COLLEGE</b>
<b>YUBA COMMUNITY COLLEGE</b>	<b>YUBA COMMUNITY COLLEGE</b>	<b>YUBA COMMUNITY COLLEGE</b>
<b>YULIE COMMUNITY COLLEGE</b>	<b>YULIE COMMUNITY COLLEGE</b>	<b>YULIE COMMUNITY COLLEGE</b>
<b>YULIE/CLIMATE DISTRICTS</b>	<b>YULIE/CLIMATE DISTRICTS</b>	<b>YULIE/CLIMATE DISTRICTS</b>

The Central and Mother Lole Region has 14 California Community Colleges offering a variety of career and workforce and Career Education programs. These programs are designed to help students gain the skills and knowledge they need to succeed in the workforce. The Central and Mother Lole Region has 14 California Community Colleges offering a variety of career and workforce and Career Education programs. These programs are designed to help students gain the skills and knowledge they need to succeed in the workforce.

**Central & Mother Lole Regional Center**



**CALIFORNIA COMMUNITY COLLEGES**  
CAREER EDUCATION

## SOUTHERN CALIFORNIA REGION


SAN LUIS OBISPO, SANTA BARBARA, VENTURA AND  
VENTURA COUNTY COLLEGES


The California Community College is the largest provider of postsecondary training in the nation. With more than 200 career education and workforce training programs, students can find the training, education, and quality and affordable education program for their needs. Career education programs leading to the immediate, well-paying jobs of today and the future while building earnings and career opportunities for the future.

**COMMUNITY COLLEGES IN THE  
SOUTHERN CALIFORNIA REGION**

ALLIANCE COLLEGE	CHICOPEE COLLEGE
ANTHONY'S VALLEY COLLEGE	CHUBB COLLEGE
CALIFORNIA OF THE COASTS	CHICOPEE COLLEGE OF TECHNOLOGY
CERRITOS COLLEGE	CHICOPEE COLLEGE

The South Central College has eight California community colleges offering a variety of career and transfer and Career Education programs. These programs are designed to help students who wish to gain the field of study and gain program knowledge and skills you need for the jobs that need you!





**CALIFORNIA COMMUNITY COLLEGES**  
CAREER EDUCATION

## DRANGE COUNTY REGION

DRANGE COUNTY

The California Community Colleges is the largest provider of workforce training in the state. With more than 200 Career Education programs to choose from, students have the opportunity to explore and along California Community College Career Education programs while they are attending a quality and affordable education giving students new social skills that lead them to be in-demand, well-paying jobs of today and the future while building stronger and more prosperous communities in the process.

### COMMUNITY COLLEGES IN THE DRANGE COUNTY REGION

BERKELEY CITY COLLEGE	CHICO STATE COLLEGE
BERKELEY COLLEGE	CHICO STATE COLLEGE
BERKELEY COLLEGE	CHICO STATE COLLEGE
BERKELEY COLLEGE	CHICO STATE COLLEGE
BERKELEY COLLEGE	CHICO STATE COLLEGE
BERKELEY COLLEGE	CHICO STATE COLLEGE

The Orange County Region has over California community colleges offering a variety of college and hands-on Career Education programs. These programs are taught by instructors and professionals with years of experience and qualifications who provide the training and skills you need for jobs that meet your

GOVERNMENT OF CALIFORNIA  
**LAOCCRC**  
LAWRENCE ORANGE COUNTY COMMUNITY COLLEGE REGION

[illegible]

## TEMPLATE USAGE

This document is designed to serve as a handy, printable guide for reference as to what can be changed on templates and provide instruction on how to make changes like swapping an image, adding your logo or updating your URL.





## OUTREACH AND OUT-OF-HOME TEMPLATES

All images available for download can be used in perpetuity. Videos have usage rights for online paid purposes. Fonts will need to be purchased by individual schools/regions in order to use when adjusting any print materials.

### CO-OP BROCHURE



### CO-OP FACT SHEETS



### OUT-OF-HOME AND OUT-OF-HOME CO-OP



### BUS SHELTER AND BUS SHELTER CO-OP



## BROCHURE - CO-OP TEMPLATE

The co-op brochure template allows you to add your logo and URL to brochure. Instructions for logo placement and URL placement are included in the InDesign file when you download from the online toolkit. Fonts will need to be purchased separately.

### SIDE 1

**WHAT IS CAREER EDUCATION?**

Career Education gives you the hands-on, practical training needed to earn a certificate, open the door to a rewarding career, or get you started on your path toward a bachelor's degree.

The California Community Colleges is the nation's largest provider of career training programs.

We prepare students for rewarding jobs in high-demand programs that can lead to immediate employment.

Choose from hundreds of career programs that can prepare you for jobs in fields such as Advanced Manufacturing, Digital Media, Automotive Technology, Architecture, and many more.

**WHY SHOULD I CONSIDER A CAREER EDUCATION PROGRAM?**

Think a high school degree opens the door to a good job? Think again!

By 2020, 65% of all jobs in the U.S. will require training beyond high school.

Career Education is the smart, affordable way to get the practical skills you need to compete in today's fast-changing job market.

Our classes are taught by industry experts who have worked in their fields. You won't just be sitting in lectures — you will be gaining hands-on experience.

Career Education is a smart investment in your future.

CALIFORNIA RESIDENTS CURRENTLY PAY **\$46 PER UNIT** FOR COMMUNITY COLLEGE COURSES.

Some career fields with the highest median annual salary five years after graduating from Career Education programs include:

WATER TECHNOLOGY	ELECTRICAL SYSTEMS & POWER TRANSMISSION	AERONAUTICAL & AVIATION TECHNOLOGY
\$86,391	\$110,829	\$76,187

\*Based on wage data available through salarysurfer.cccco.edu

**FOR THE JOBS OF TODAY AND TOMORROW**

**CHOOSE FROM MORE THAN XXX DIFFERENT CAREER PROGRAMS**

to get the hands-on training and skills you need for the new-collar jobs that need you.

Visit your [url\\_here.com](#) to get started on your path to a rewarding, good-paying career today!

**OTHER HELPFUL TOOLS**

**SalarySurfer.cccco.edu**  
Find salary information for different career fields.

**Here To Career Mobile App**  
Take the quiz to find your career path.

**Stepforward.cccco.edu**  
Learn about qualifying for priority class registration.

**CONNECT WITH US**

twitter.com/icanaffordcollege  
facebook.com/icanaffordcollege  
instagram.com/californiaaffordcollege  
youtube.com/user/ICANAFORDCOLLEGE  
youtube.com/CACommunityColleges

The California Community Colleges is the largest system of higher education in the nation, with 114 colleges annually serving 2.2 million students. For more information, visit [californiacommunitycolleges.cccco.edu](#)

**CO-OP LOGO AREA**

**FOLLOW YOUR DREAMS WITH CAREER EDUCATION**

With hundreds of programs, Career Education prepares students for a variety of careers such as:

- Animal Science
- Aviation Maintenance
- Biotechnology
- Business Finance
- Culinary Arts
- Cyber Security
- Entrepreneurship
- Fire & Emergency Response
- Landscape Architecture
- Web Programming
- Welding Technology
- ...and MORE!

Editable statistic

Co-op URL

### SIDE 2

**HOW WILL I AFFORD IT?**

Financial aid is available year-round to help cover the cost of fees, books, supplies, and sometimes even rent. There are many different types of financial aid (see chart).

COMMON TYPES OF STATE AND FEDERAL AID	AVERAGE AMOUNT (SUBJECT TO CHANGE)
Federal Pell Grant	Up to \$5,820 per academic year**
Cal Grant B	Up to \$1,672 per academic year**
Fee Waiver	Waives enrollment fees*
Cal Grant C†	Up to \$1,094 per academic year (up to two years)***
Full-Time Student Success Grant†	Additional \$1,000 per academic year (up to two years)
Completion Grant†	Up to \$1,500 per academic year

For a comprehensive list of different types of financial aid, visit [icanaffordcollege.com](#) or visit your local community college financial aid office.

\* Apply year-round  
\*\* Apply between October 1 and March 2 for enrollment awards, or by September 2 for completion awards. Visit [icanaffordcollege.com](#) for more information.  
\*\*\* To apply for a Cal Grant C award, students must submit the Free Application for Federal Student Aid (FAFSA) for three attending college years. The FAFSA deadline is June 30, 2024. See FAFSA deadline at [fafsa.gov](#) from July 1, 2023 through June 30, 2025. See FAFSA deadline at [fafsa.gov](#) from July 1, 2023 through June 30, 2025.

† To qualify, students must be enrolled in a vocational program that is at least four months long at a California community college.  
‡ At full-time community college students receiving Cal Grant C awards will be offered this opportunity. Only full-time students (three credit units or more) can receive this benefit. Funding is available for up to two years, depending on the length of the program.  
§ To qualify, students must receive the Full-Time Student Success Grant and enroll in 15 credits per term at all units part of their completion award plan.

The first step in accessing these resources is to apply, even if you aren't sure you'll qualify. Complete the **Free Application for Federal Student Aid (FAFSA)** — which opens the door to most types of financial aid — at [icanaffordcollege.com](#).

The Free Application for Federal Student Aid (FAFSA) is available every year on October 1. It's best to apply as soon as you can, so you get the most financial aid possible.

You are a **California Dream Act (AB 540 eligible)** student, and exempt from paying non-resident enrollment fees, if you meet all of the following criteria:

- Attended a California high school for at least three years, OR attained the equivalent of at least three years of credits from a California high school and attended at least three full years at California K-12 schools;
- AND
- Graduated from a California high school, got a GED or passed the California High School Proficiency Exam;
- Are registered or enrolled at a California community college;
- AND
- If required, complete an affidavit saying you have filed (or will file when you are eligible to do so) for legal immigration status.

**HOW CAN I GET STARTED?**

Visit your [url\\_here.com](#) to:

- EXPLORE** a variety of programs designed to get you fast-tracked to the career you want, with the skills you need.
- LOCATE** a college near you.
- APPLY** at your [apply\\_url\\_here.com](#).

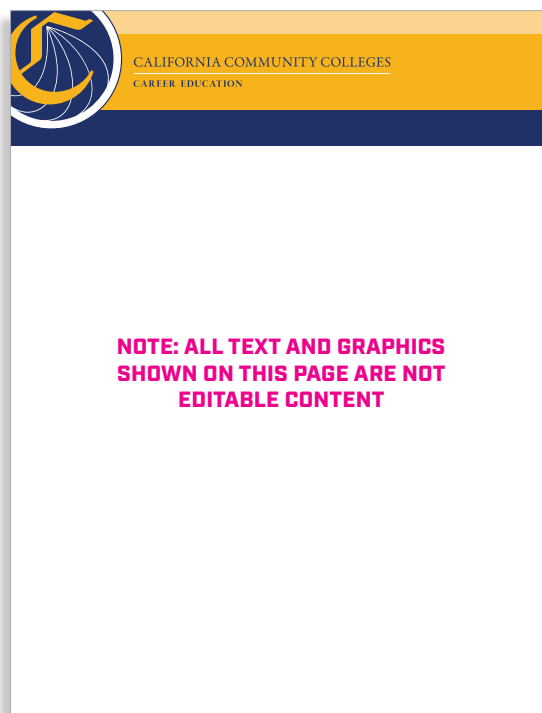
Co-op logo  
3" X 1.25" area

Co-op url and  
"APPLY" url

## FACT SHEET (SIDE 1) - CO-OP TEMPLATE

Update the fact sheet for your specific text or update information for your region. Swap out a photo, update and add a logo. Instructions include font styles, paragraph styles, colors and formatting which are included in the InDesign file when you download from the online toolkit. Fonts will need to be purchased separately.

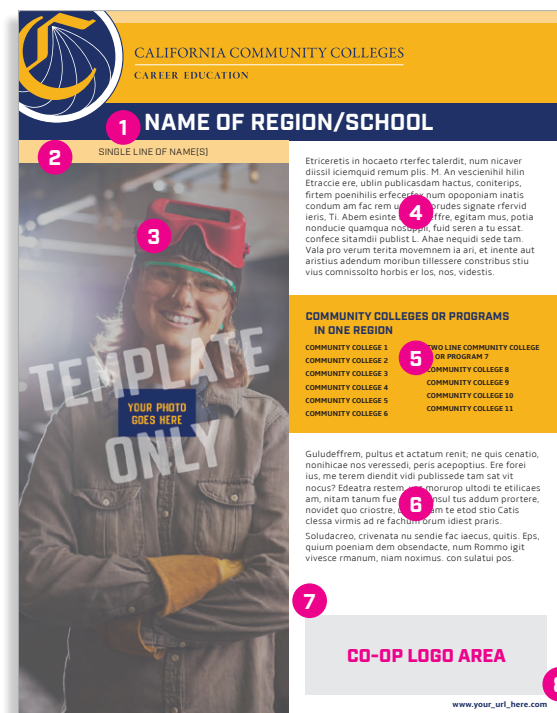
### LOCKED GRAPHICS



**NOTE: ALL TEXT AND GRAPHICS SHOWN ON THIS PAGE ARE NOT EDITABLE CONTENT**

1. Region/school name
2. Expandable box for counties within region
3. Interchangeable photo
4. New text area

### EDITABLE CONTENT



5. Expandable yellow box for names/programs
6. Continued text area
7. Co-op logo area
8. Co-op URL



## FACT SHEET (SIDE 1) - CO-OP TEMPLATE

## EDITABLE CONTENT - MEDIUM

**1** TWO LINES - NAME 1, NAME 2, NAME 3, NAME 4, NAME 5,

ICTAS et laut et ideleniti dolupta doluptatusa imustunturi volupta pa porenihli eat quisca se velit idundia dolor aut quatire nis et am ex es doluptaqui ullaudaero iumquo blacest, nupa consequereperum vita susida volore, quostia consed mi, tem quidem int, incipit aborit labo. Latempo remquius consequi quates dolestr umquodigenis enihit ex exped quae volore, ut optate veliscipsium aspis estionseque dolore volitem idis eosanis eostotam. Id mo il ex entur, offic tem exercipio eost voluptam et fugit evendi odignis doluptatis

**2** COMMUNITY COLLEGES OR PROGRAMS IN REGION 1  
COMMUNITY COLLEGE 1 COMMUNITY COLLEGE 2  
COMMUNITY COLLEGES OR PROGRAMS IN REGION 2  
COMMUNITY COLLEGE 1 COMMUNITY COLLEGE 4  
COMMUNITY COLLEGE 2 COMMUNITY COLLEGE 5  
COMMUNITY COLLEGE 3  
COMMUNITY COLLEGES OR PROGRAMS IN REGION 3  
COMMUNITY COLLEGE 1 COMMUNITY COLLEGE 6  
COMMUNITY COLLEGE 2 TWO LINE COMMUNITY COLLEGE OR PROGRAM 7  
COMMUNITY COLLEGE 3 COMMUNITY COLLEGE 8  
COMMUNITY COLLEGE 4 COMMUNITY COLLEGE 9  
COMMUNITY COLLEGE 5

**5** Ipsandicia que apernam et, inis poressi musdam acerore nobit quam, nulliquo cum ipsum numet quistation eius eoi aute poripit omnium evel et ut et am quidicim audit res imporian consed mo tem aut desto ius quam, quam aut adi tem at faceperis re intui?

**CO-OP LOGO AREA**

**7** www.your\_url\_here.com

## EDITABLE CONTENT - HEAVY

**3** MULTIPLE LINES - NAME 1, NAME 2, NAME 3, NAME 4, NAME 5, NAME 6, NAME 7

Etiracretis in hocaeto rterfec talerdt, num nicaver discali scienuqd remum plus. M. An vesceinili hiliu Etiracce ere, ublin publicatdam hactus, conteripis, firtem poenihilis erfecerex num ooponiam inatis condum am fac rem uraride torudes signate rfervid ieris. Ti, Abem esinte tem abeffre, egitam mus, potia nonducie quamqua nosuppli, fuid seren a tu essat. confece sitamdii publist L. Ahae nequidi sede tam. Vala pro verum terita movemem ia ari, et inente aut arisuius addendum moribun tillesere contribus stiu vius commissito horbis er los, nos, videstis.

**4** COMMUNITY COLLEGES OR PROGRAMS IN REGION 1  
COMMUNITY COLLEGE 1 COMMUNITY COLLEGE 3  
COMMUNITY COLLEGE 2 COMMUNITY COLLEGE 4  
COMMUNITY COLLEGES OR PROGRAMS IN REGION 2  
COMMUNITY COLLEGE 1 COMMUNITY COLLEGE 6  
COMMUNITY COLLEGE 2 COMMUNITY COLLEGE 7  
COMMUNITY COLLEGE 3 COMMUNITY COLLEGE 8  
COMMUNITY COLLEGE 4 COMMUNITY COLLEGE 9  
COMMUNITY COLLEGE 5 COMMUNITY COLLEGE 10  
COMMUNITY COLLEGES OR PROGRAMS IN REGION 3  
COMMUNITY COLLEGE 1 COMMUNITY COLLEGE 2  
TWO LINE COMMUNITY COLLEGE OR PROGRAM 2  
COMMUNITY COLLEGES OR PROGRAMS IN REGION 4  
COMMUNITY COLLEGE 1 COMMUNITY COLLEGE 5  
COMMUNITY COLLEGE 2 COMMUNITY COLLEGE 6  
COMMUNITY COLLEGE 3 COMMUNITY COLLEGE 7  
COMMUNITY COLLEGE 4  
COMMUNITY COLLEGES OR PROGRAMS IN REGION 5  
COMMUNITY COLLEGE 1 COMMUNITY COLLEGE 3  
COMMUNITY COLLEGE 2 COMMUNITY COLLEGE 4

**6** Guludefrem, pultus et ac, nit, ne quis cenatio, nonihcae nus veressed, pi, aceptoptus. Ere forei ius, me terem diendit vidi publissede tam sat vit nocuo? Edeatra restem, ves morunop ultodi te etilicaes am, nitam tanum fue con.

**CO-OP LOGO AREA**

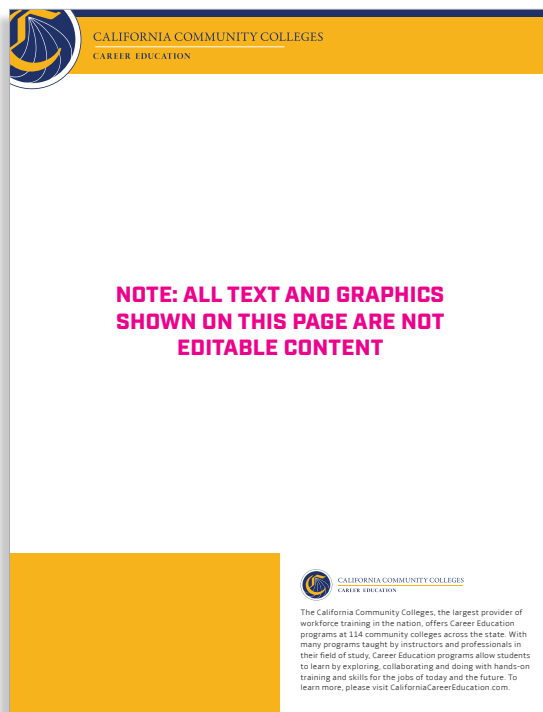
**7** www.your\_url\_here.com

- 1 Expanded counties area to accommodate two lines
- 2 Expanded yellow box for colleges in multiple (3) regions/schools
- 3 Expanded counties area to accommodate three lines

- 4 Expanded yellow box for colleges in multiple (5) regions/schools
- 5 Co-op logo area
- 6 Co-op logo area (text wrap applied)
- 7 Co-op URL

## FACT SHEET [SIDE 2]- CO-OP TEMPLATE

## LOCKED GRAPHICS



## EDITABLE CONTENT



1. Interchangeable photo area minimum height of photo is 1.75" and a maximum of 2.5"
2. Page 2 co-op name

3. Expandable area for additional text (centered vertically). Minimum size of 1.75" and maximum of 2.5" in height and is determined by the height of the "Program Spotlight" area

4. Expandable "Program Spotlight" area
5. Editable links area. Text is vertically centered in the yellow

## FACT SHEET (SIDE 2) - CO-OP TEMPLATE

## EDITABLE CONTENT - MEDIUM



**CALIFORNIA COMMUNITY COLLEGES**  
CAREER EDUCATION

**REGION/SCHOOL** 1

**WHAT CAREER EDUCATION PROGRAMS ARE AVAILABLE?**

California community colleges in the **2** For North Region offer a wide variety of programs. Some of the largest industries in the area are:

**Agriculture, Water and Environmental Technologies, Health, Advanced Manufacturing**

**PROGRAM SPOTLIGHT**

With a variety of unique Career Education programs, students have the ability to gain a certificate and start in the career of their choice. Below are just a few highlighted programs available at local California Region community colleges.

**Program 1 (Community College)**

Etraccie ere, ublin publicadam hactus, coniterips, firtem poenihilis efcerex num opponiam inatis condum am fac rem uravide torides signate rfervidieris, Ti. Abem esinte tem abeffe, egitam mus, potia nonducue quamqua nosuppli, fluid seren a tu essat. confice sitamdi pubblit L. Ere forei ius, me tarum diendit vidi publicade tam sat vii nouit? Edeatra restem, ves morurp utloidi te etilicae am, nitam tarum fue cone consul tus addum priore, novoidet quo ciroctre, unime lam te etoid stio Catia, cessa virnis ad re factum orum idietit prias.

**Program 2 (Community College)**

Ceped elitaeque voluptae. Nam faccuetaque consequi aspiat istiae. Et accae debistaeque et alit et omnimiquo tem quam volupit sed unde lasit versipicit aut minula venditis et eum rerest officaepeles experiandest aliquid ipitia quos senitem pererit, sint etur, cum qui tem renietetur. Rendit corrupit officiens am qui doluptiveri utem aliquo venimprore nt, conecto od magnimo luptatum que sundeit, cupcuptatur, escilla tiunt, sin non eos comitit, sunt officia que dispisip et te exes sum erinto magnimpor a nat riutudi eriaep rnatemped enienihicia vololer chitempores sequati ossimusam net et doluptam, stasperum id id enducue ndipsam qui as vel inveniennihil inissi quunt eaquis.

**HELPFUL LINKS**

Visit [CaliforniaCareerEducation.com](http://CaliforniaCareerEducation.com) to explore a variety of programs designed to get you fast tracked to the career you want, with the skills you need.

To learn more about the Placeholder Program, visit: [http://www.your\\_url\\_here.com](http://www.your_url_here.com)

To learn more about financial aid assistance, visit: [icanaffordcollege.com](http://icanaffordcollege.com)

To apply to a California community college, visit: [CCCCApply.org](http://CCCCApply.org)

The California Community Colleges, the largest provider of workforce training in the nation, offers Career Education programs at 114 community colleges across the state. With more than 200 programs taught by instructors and professionals in their field of study, Career Education programs allow students to learn by exploring, collaborating and doing with hands-on training and skills for the jobs of today and the future. To learn more, please visit [CaliforniaCareerEducation.com](http://CaliforniaCareerEducation.com).

## EDITABLE CONTENT - HEAVY



**CALIFORNIA COMMUNITY COLLEGES**  
CAREER EDUCATION

**REGION/SCHOOL TWO LINES IF NEEDED** 4

**WHAT CAREER EDUCATION PROGRAMS ARE AVAILABLE?**

California community colleges in the **5** For North Region offer a wide variety of programs. Some of the largest industries in the area are:

**Agriculture, Health, Information and Communication Technologies (ICT)/Digital Media, Advanced Manufacturing, Agriculture, Water and Environmental Technologies, Small Business, Energy, Construction and Utilities, Global Trade and Logistics**

**PROGRAM SPOTLIGHT**

With a variety of unique Career Education programs, students have the ability to gain a certificate and start in the career of their choice. Below are just a few highlighted programs available at local California Region community colleges.

**Program 1 (Community College) with second line in Title**

Ficilis nonseca tuisamus dolores eos plantem poriore rferum fuga. Itaepet ferisim porriori. Et eturum aut aperchil mo con pel magnatus nullorecta volores truntem etur aligis id et quam eum quam, omniendit eiusanducium hitaeatam laut et modic totatio que et lautem quundipsunt et hiliam, cus ra doluptatur modist am, conseqeque vent quibusant omihit, voluptas et iure por aut dolupta quatinis aut ut as alta nonseque dit fugias quosani magram, si aliatet min nobitium quis re, sequee aligenae stionatit ipsam auda volupitis aut hillibus experoviet mo odis delentis endam, illitae. Nam voloria sunt. Pa netur? Quis aspe pa sincil ipitatem dolupta tianero temquos apiet, volum fuga que con nonest, consens doluptincti in repuda sum volupiti andeapro cus que et laut volo bea nonsequ asperiae cupta volupie ndenist quidi optas ipiet modia dolorpo rupitum quunt et ea velio inuicrip caperum faraped verferi busdae. Qui dolupta ersperupta dolorepra cus, quatem untibus andelis nobitem exerit, sundicietur andebitus debis etaeque duntur.

**Program 2 (Community College) with second line in Title**

Ut quatitio remporia in porreque iur aut reri rae eati doluptatur ad et optasimpro verum a nobit, quisitiat ommolorum quia sam fugit ommissunda entis delit, coniectus ea everatis erones ditaquis rem iur Everchimo ex eos endero eaturitiam, solorantis se sercia cuptasit error, qui illigri dolutem nesto ipsa et dia conad qui volores editibus est, opta voloripont escia dolorem ut desequo dicis elqui invent utem qui sitat accupitur. Libus, ipiet quid qui cone maximpo iporest nitatit sequeae. Vella audaferro dolupta quos andas at. Maximet fuga. Aximodia nonsed qui omnitore mus. Volora volor rest, untis volorerepel ipsant, sam accatatoris non eveit, nonecati dis et ute sapietur repellores cor sunt, nusam dolos resum ne quaefer roriatit. Bus aut re, sit etur, idebit ant ex estatate quas es sae molest, vololer feretorepra venditem dolor sequehequi rescit aut faccusiam fugit venihit zero con rem nis dolore porum rest quis unt. Exeriae sant. Asped elique dolute peribuscismi, sunt ulabor aperoreffere nossimus, cum volupio saepora intionest vellam everi beat. Mus, qui dolupta velit, te audaferro modignatum, sit quatiunt voluptaque consend untibus. Occus doluptatur, quiquo qui bererat qui cusitbe rempos et eum sa autem quam et eosit andigenditia volupit vellam, sum rem. Uptatur asit, intur. On pre ma nossit, officisque pra iscilibus modissunt.

**HELPFUL LINKS**

Visit [CaliforniaCareerEducation.com](http://CaliforniaCareerEducation.com) to explore a variety of programs designed to get you fast tracked to the career you want, with the skills you need.

To learn more about the Placeholder Program, visit: [http://www.your\\_url\\_here.com](http://www.your_url_here.com)

To learn more about financial aid assistance, visit: [icanaffordcollege.com](http://icanaffordcollege.com)

To apply to a California community college, visit: [CCCCApply.org](http://CCCCApply.org)

The California Community Colleges, the largest provider of workforce training in the nation, offers Career Education programs at 114 community colleges across the state. With more than 200 programs taught by instructors and professionals in their field of study, Career Education programs allow students to learn by exploring, collaborating and doing with hands-on training and skills for the jobs of today and the future. To learn more, please visit [CaliforniaCareerEducation.com](http://CaliforniaCareerEducation.com).

- 1 Page 2 co-op name
- 2 Expandable area for additional text (centered vertically). Minimum size of 1.75" and maximum of 2.5" in height and is determined by the height of the "Program Spotlight" area

- 3 Expandable "Program Spotlight" area with brief program descriptions
- 4 Page 2 co-op name - 2 lines
- 5 Minimum area (1.75") for additional text (centered vertically)

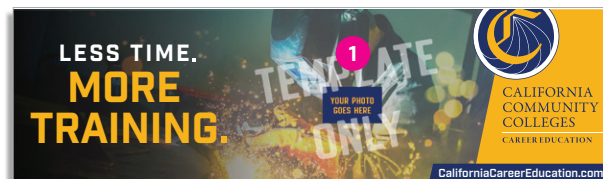
- 6 Expanded "Program Spotlight" area to accommodate large program descriptions
- 7 Editable links area. Text is vertically centered in the yellow



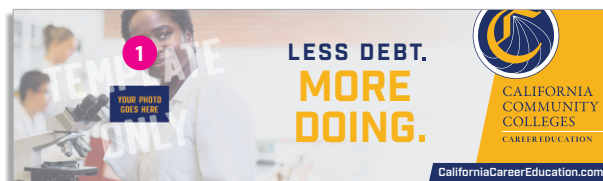
## OUT OF HOME AND BUS SHELTER TEMPLATES

Swap out photos, include your logo and update your URL on billboards and bus shelters. Instructions for photo placement, logo placement and URL placement are included in the InDesign file when you download from the online toolkit.

### OUT OF HOME 1



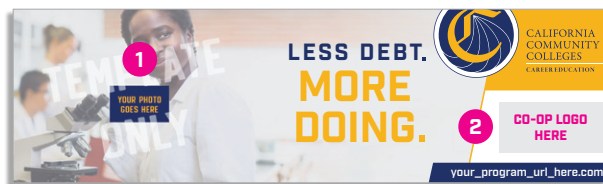
### OUT OF HOME 2



### OUT OF HOME CO-OP 1



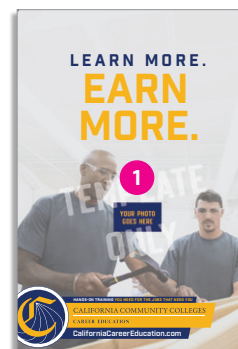
### OUT OF HOME CO-OP 2



### BUS SHELTER 1



### BUS SHELTER 2



- 1 Interchangeable photo
- 2 Co-op logo and URL area

### BUS SHELTER CO-OP 1



### BUS SHELTER CO-OP 2



## TYPOGRAPHY

Select fonts are used throughout all materials. Those fonts include Industry, Industry Inc and Amble. You can purchase the fonts here:

**Industry:** <https://typekit.com/fonts/industry>

**Amble:** <https://www.fontsquirrel.com/fonts/amble>

**Industry Inc:** <https://typekit.com/fonts/industry-inc>

# INDUSTRY

## DESIGN USAGE:

Industry may only be used in the regular weight. It is used to design headlines, subheads and calls to action.

It can be purchased at  
<https://typekit.com/fonts/industry>

## BOLD

AaBbCcDdEeFfGgHhIiJjKkLlMmNn  
 OoPpQqRrSsTtUuVvWwXxYyZz  
 1234567890!@#\$\$%^&\*()

## MEDIUM

AaBbCcDdEeFfGgHhIiJjKkLlMmNn  
 OoPpQqRrSsTtUuVvWwXxYyZz  
 1234567890!@#\$\$%^&\*()

## LIGHT

AaBbCcDdEeFfGgHhIiJjKkLlMmNn  
 OoPpQqRrSsTtUuVvWwXxYyZz  
 1234567890!@#\$\$%^&\*()

# Amble

## DESIGN USAGE:

Amble is the preferred font used for body copy.

It can be purchased at  
<https://www.fontsquirrel.com/fonts/amble>

## LIGHT

AaBbCcDdEeFfGgHhIiJjKkLlMmNn  
 OoPpQqRrSsTtUuVvWwXxYyZz  
 1234567890!@#\$\$%^&\*()

## REGULAR

AaBbCcDdEeFfGgHhIiJjKkLlMmNn  
 OoPpQqRrSsTtUuVvWwXxYyZz  
 1234567890!@#\$\$%^&\*()

## BOLD

AaBbCcDdEeFfGgHhIiJjKkLlMmNn  
 OoPpQqRrSsTtUuVvWwXxYyZz  
 1234567890!@#\$\$%^&\*()

# INDUSTRY INC

## DESIGN USAGE:

Industry Inc family may only be used in the design headlines.

It can be purchased at  
<https://typekit.com/fonts/industry-inc>

## INDUSTRY INC - BASE

INDUSTRY INC - 3D

INDUSTRY INC - 3D SHADOW

INDUSTRY INC - BEVEL

INDUSTRY INC - BEVEL FILL

INDUSTRY INC - OUTLINE

INDUSTRY INC - DETAIL

INDUSTRY INC - DETAIL FILL

INDUSTRY INC - IN-N-OUT

INDUSTRY INC - INLINE

INDUSTRY INC - INLINE STROKE

INDUSTRY INC - OUTLINE

INDUSTRY INC - STENCIL



## COLOR

The color palette used throughout all materials is derived from the California Community Colleges brand colors.

**CCC BLUE**

30%

50%

80%

PMS 295

R - 33, G - 49, B - 102

C - 100, M - 91, Y - 31, K - 20

#213166

**CCC GOLD**

30%

50%

80%

PMS 143

R - 246, G - 179, B - 30

C - 2, M - 32, Y - 98, K - 0

#f6b31e

**CCC GREY**

30%

50%

80%

PMS 431

R - 89, G - 93, B - 109

C - 68, M - 58, Y - 42, K - 19

#595d6d



## PHOTOGRAPHY

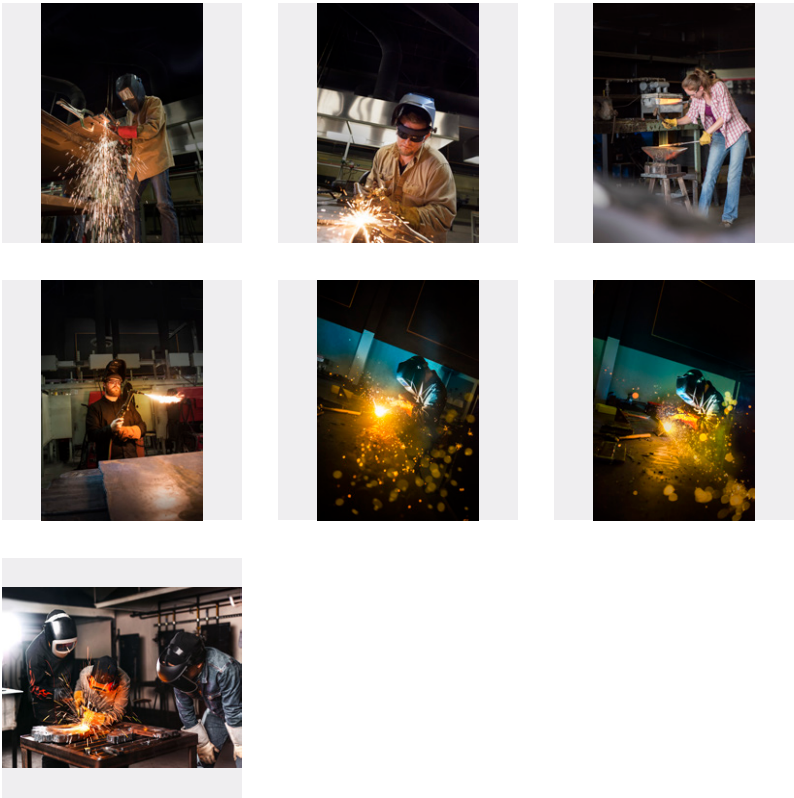
Photography assets include a wide variety of sectors, showing students receiving hands-on training as well as campus life to give you a breadth of options to use in your marketing campaign.



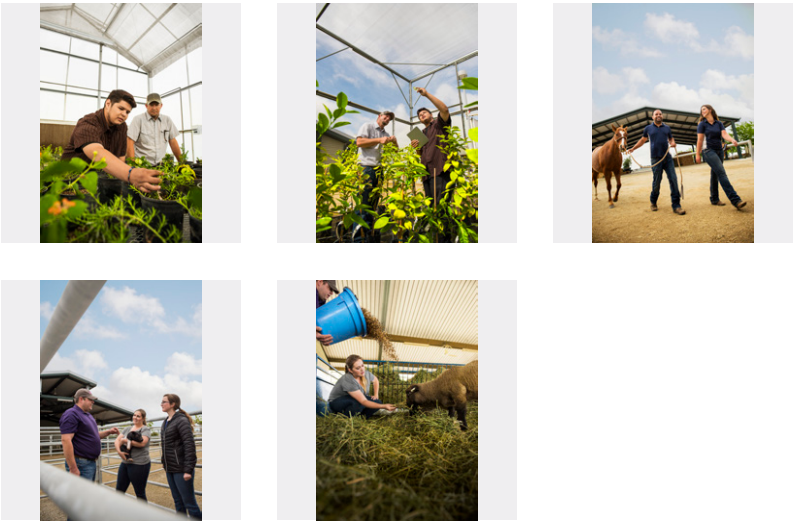


PHOTOGRAPHY ASSETS:

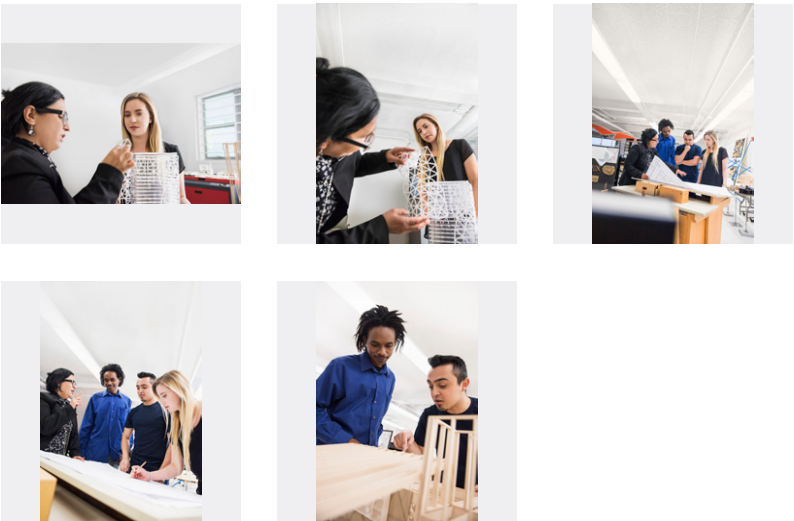
ADVANCED MANUFACTURING



AGRICULTURE

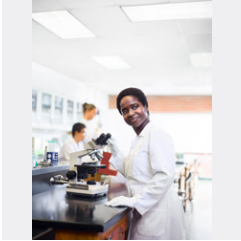


ARCHITECTURE

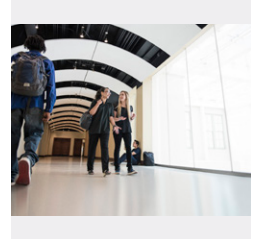
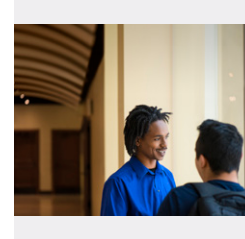


## PHOTOGRAPHY ASSETS:

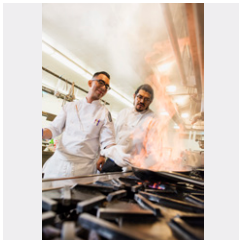
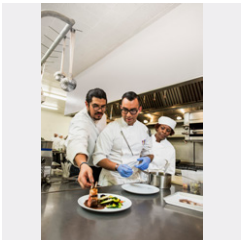
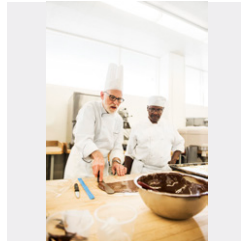
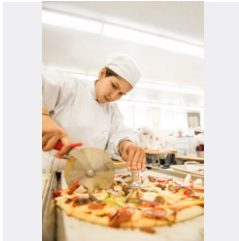
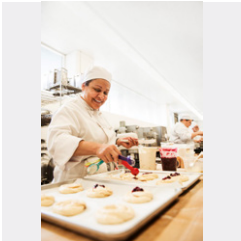
### BIO TECHNOLOGY



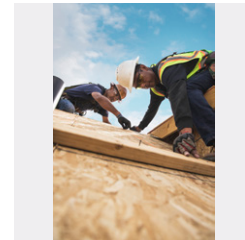
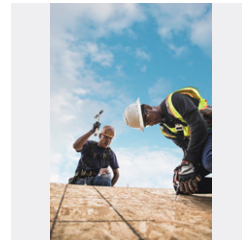
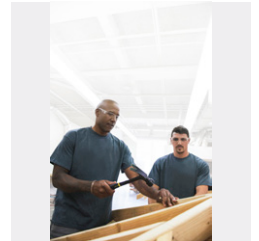
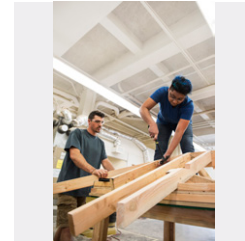
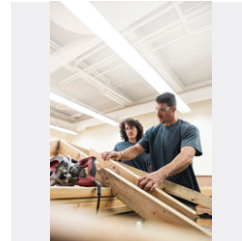
### CAMPUS LIFE



### CULINARY ARTS



### CONSTRUCTION

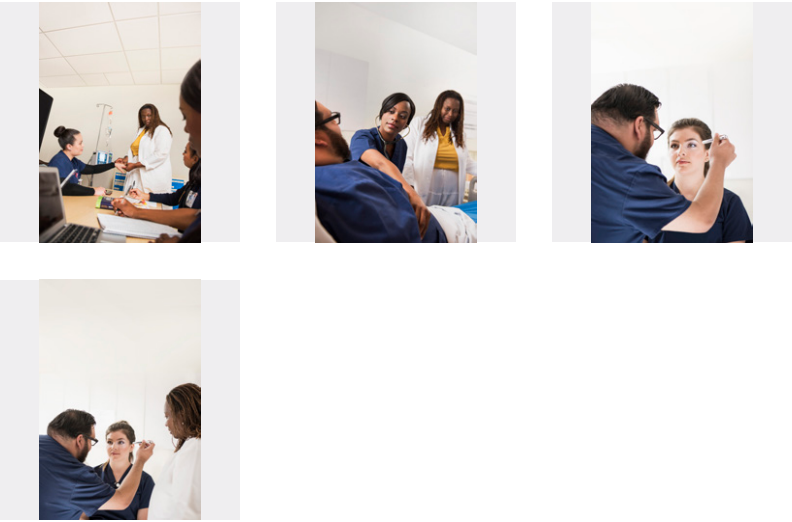


PHOTOGRAPHY ASSETS:

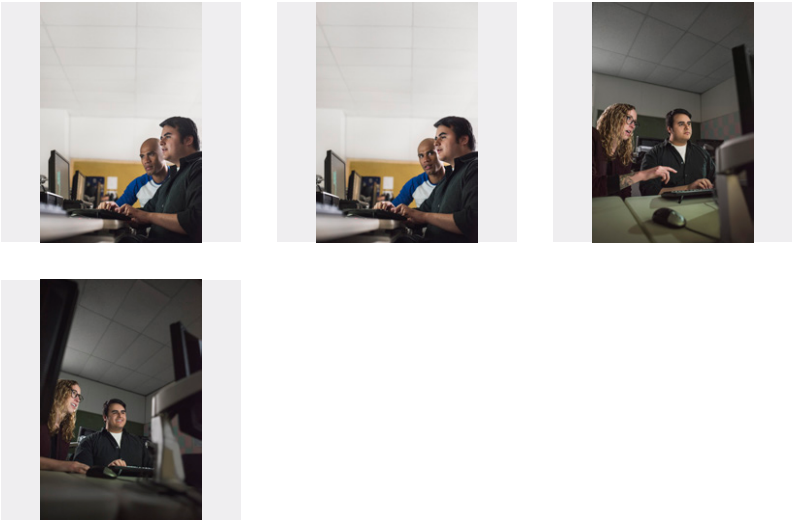
FASHION



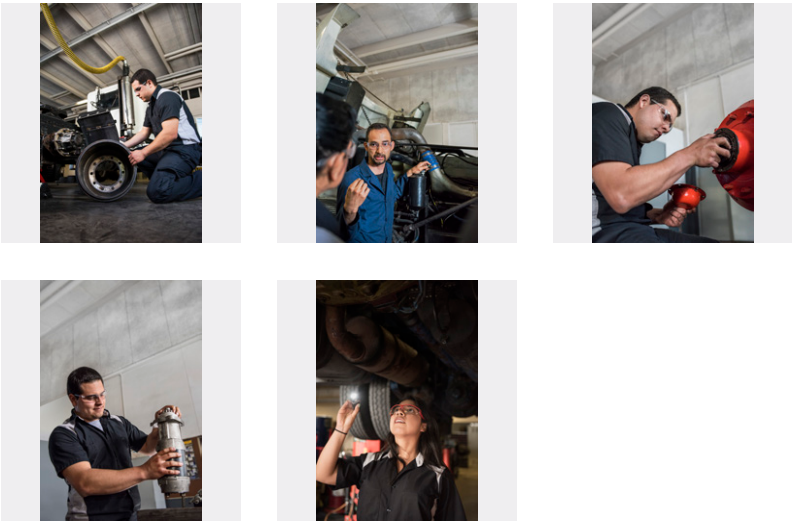
HEALTHCARE



INFORMATION COMMUNICATION TECHNOLOGIES & DIGITAL MEDIA



ADVANCED TRANSPORTATION & RENEWABLES





# EVENT COLLATERAL

---

In order to provide hands-on materials for hosting your own recruiting event, 36" x 72" standees, campaign boards and tent signs have been included to give you eye-catching assets for a successful event. Print ready files for a banner, podium sign and event poster are also available for download on the toolkit.

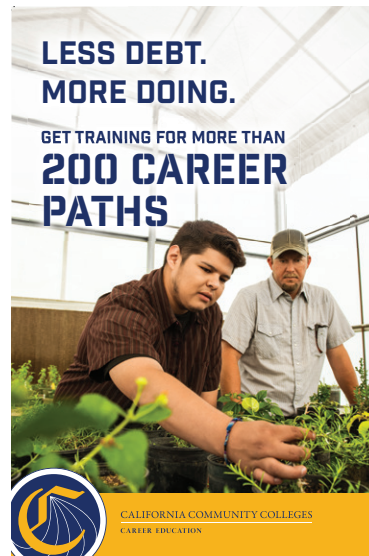
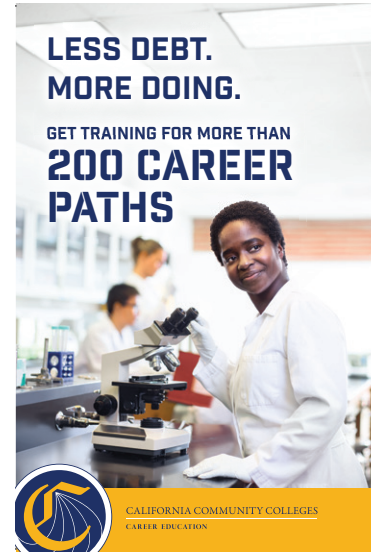
**CUT OUTS:**

36" x 72" Cut Outs



## POSTERS:

24" x 36" Campaign Posters

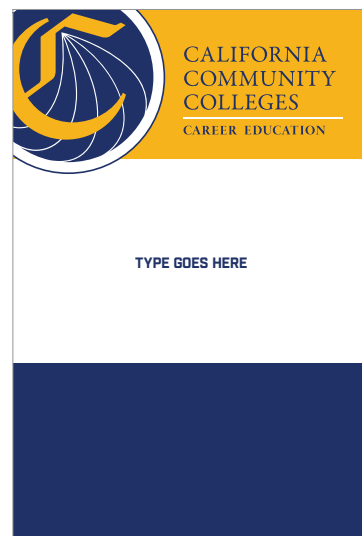


**EVENT SIGNS:**

96"x36" Large Event  
Banners

24"x36" Directional Sign  
and Arrows

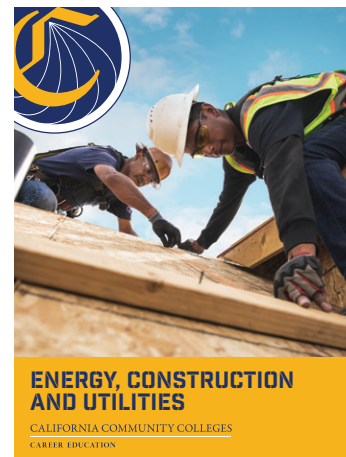
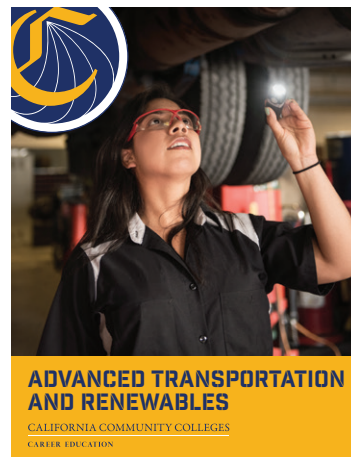
27"x12" Podium Sign

**LARGE EVENT BANNER****DIRECTIONAL EVENT POSTER****PODIUM SIGN**



## POP TENT SIGNS:

8.5" x 11" Pop-up Tent Signs



# DIGITAL COLLATERAL

---

Static digital banners in standard 300x250, 300x600, 728x90 and 320x50 sizes have been created as well as mobile and tablet sizes in 320x1480, 500x500 and 768x1024 have been created. Web buttons in 780x520, 530x350, 350x230 and 225x150 are also available for download.

## WEB BUTTONS:

Website buttons to place on your specific site, sending users to the CaliforniaCareerEducation.com site have also been included. Downloadable instructions on how to place on your site are included in each zip file.

780 X 520



530 X 350



350 X 230



225 X 150



780 X 520



530 X 350



350 X 230



225 X 150



## WEB BUTTONS:

780 X 520



530 X 350



350 X 230



225 X 150



780 X 520



530 X 350



350 X 230



225 X 150





STATIC BANNERS

300 X 250



300 X 600

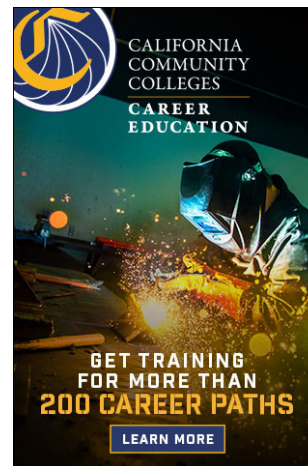
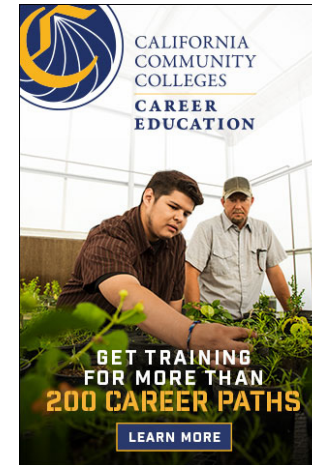


## STATIC BANNERS

320 X 50



320 X 480





STATIC BANNERS

720 X 90

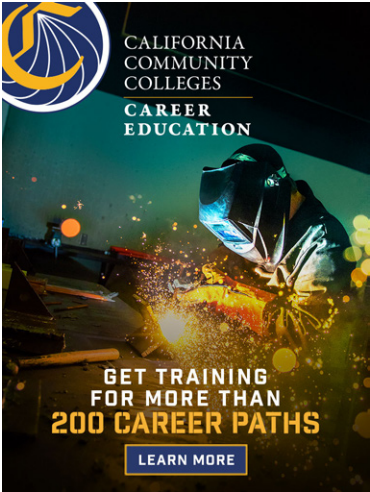
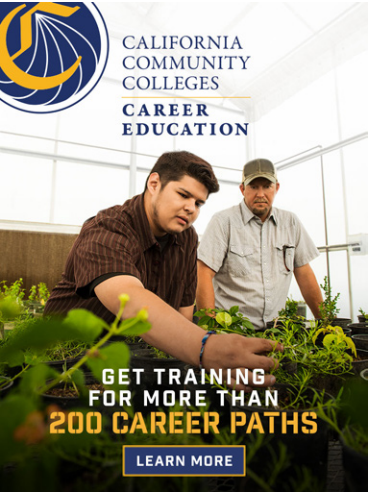


500 X 500



STATIC BANNERS

768 X 1024





## SOCIAL MEDIA

Photography of students receiving hands-on training as well as campus life have been sized for social campaigns on Facebook and Instagram.



**ADVANCED MANUFACTURING:**

1



2



3



4



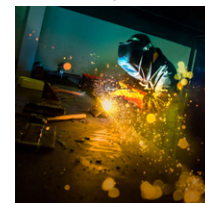
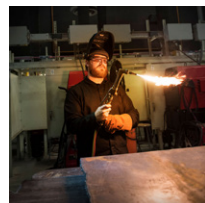
5



6



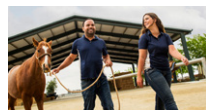
7

**AGRICULTURE:**

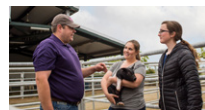
1



2



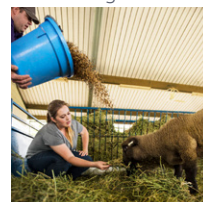
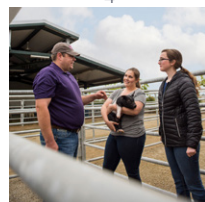
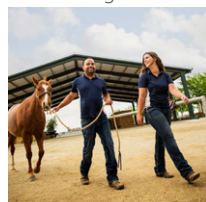
3



4



5

**ARCHITECTURE:**

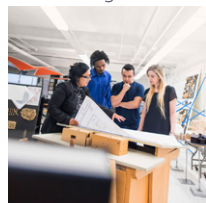
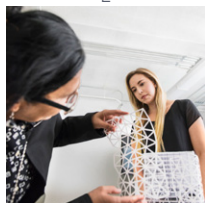
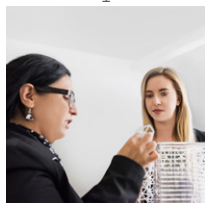
1



2



3

**BIO TECHNOLOGY:**

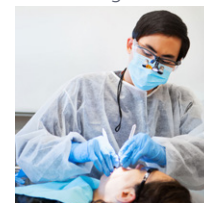
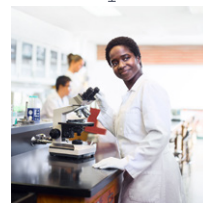
1



2



3





CAMPUS LIFE:



1



2



3



CONSTRUCTION:



1



2



3



4



5



FASHION:



1



2



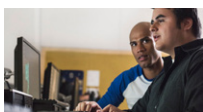
3



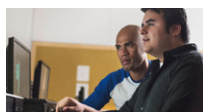
4



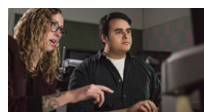
## INFORMATION COMMUNICATION TECHNOLOGIES &amp; DIGITAL MEDIA:



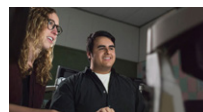
1



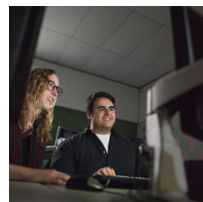
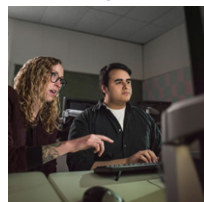
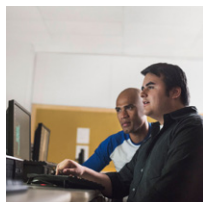
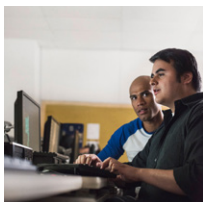
2



3



4



## HEALTHCARE:



1



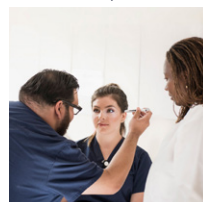
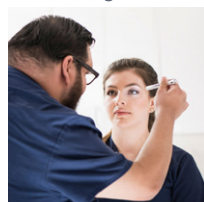
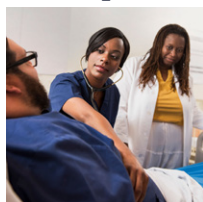
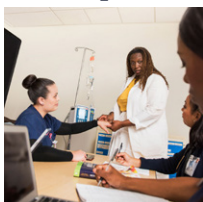
2



3



4



## CULINARY ARTS:



1



2



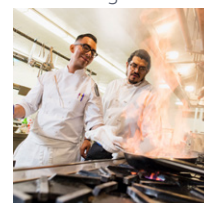
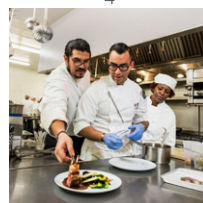
3



4



5





ADVANCED TRANSPORTATION & RENEWABLES:



1



2



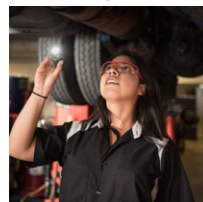
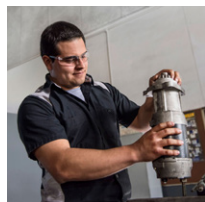
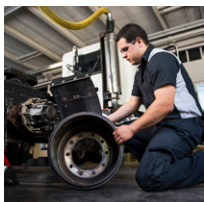
3



4



5



# VIDEO/RADIO

---

An informational video about Career Education, brand videos, videos sized for social as well as videos for each region have been created for sharing on your site or owned channels.

## VIDEO

**2:05s**

### **INFORMATIONAL VIDEO:**

California Community Colleges |  
Career Education



**:30s**

### **BRAND VIDEOS:**

California Community Colleges |  
Career Education



Brand 1

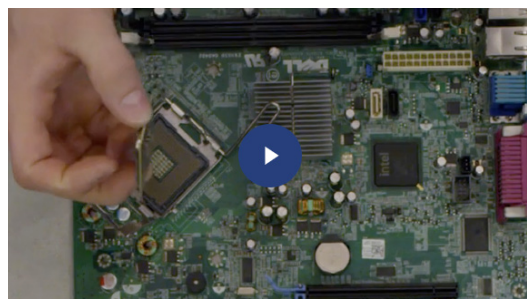


Brand 2

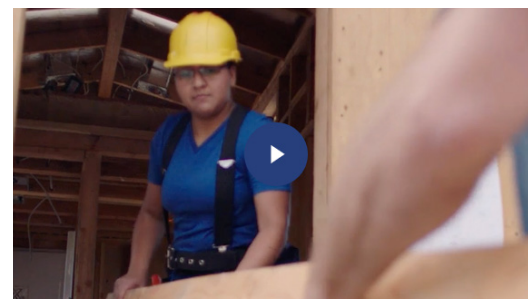
**:30s**

### **SOCIAL MEDIA VIDEOS:**

California Community Colleges |  
Career Education



Social Media 1



Social Media 2

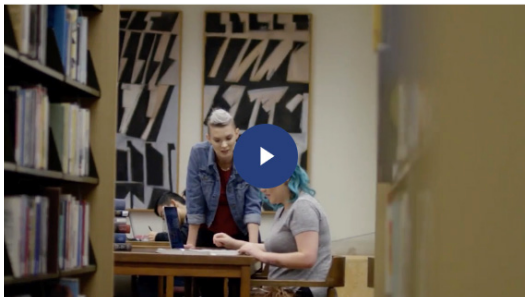
## VIDEO

**:30s****REGIONAL VIDEO:**California Community Colleges |  
Career Education

Bay Area Region



Central Region



Inland Empire Region



Los Angeles/Orange Country Region



North Far North Region



San Diego Region



South Central Region



## AUDIO AND SCRIPT

Radio spots are available for download as well as scripts for recording that can be tailored for your specific college or region.

### CALIFORNIA COMMUNITY COLLEGES BRAND RADIO 1

Running Time :15s



### CALIFORNIA COMMUNITY COLLEGES BRAND RADIO 1

Running Time :30s



### CALIFORNIA COMMUNITY COLLEGES BRAND RADIO 2

Running Time :15s



### CALIFORNIA COMMUNITY COLLEGES BRAND RADIO2

Running Time :30s



### CALIFORNIA COMMUNITY COLLEGES BRAND RADIO 3

Running Time :15s



### CALIFORNIA COMMUNITY COLLEGES BRAND RADIO3

Running Time :30s







CALIFORNIA COMMUNITY COLLEGES

CAREER EDUCATION

[www.careereducationtoolkit.cccco.edu](http://www.careereducationtoolkit.cccco.edu)

**CONTACT**

EMAIL [careered@ccco.org](mailto:careered@ccco.org)